

UMDR-WPM

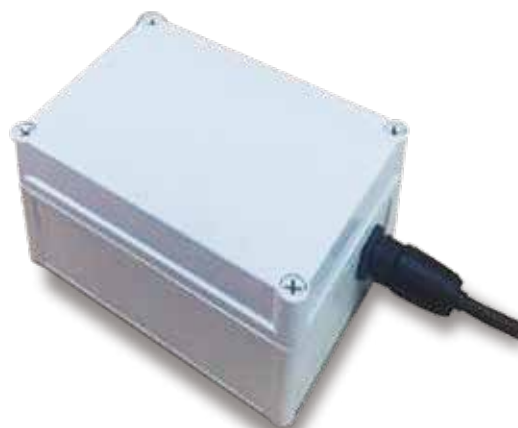
Universal Microwave CW Radar Series
Intelligent Collision Warning Radar

Detection
distance can
reach 50 meters.

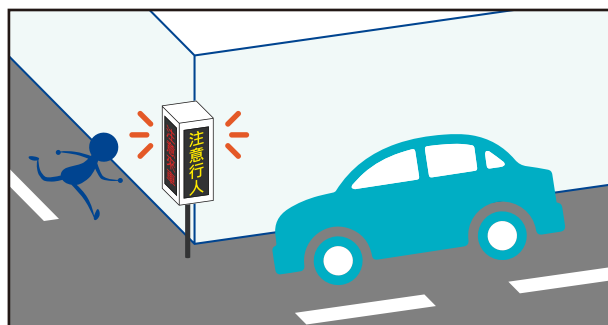
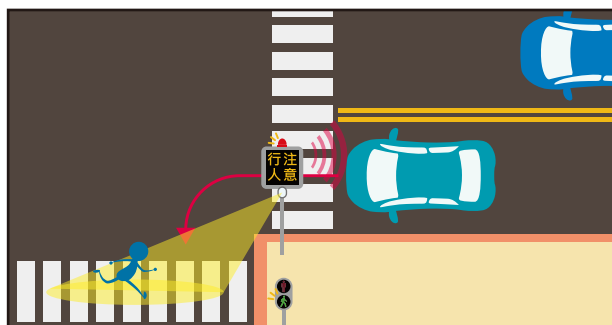
Designed
and produced
in Taiwan.

Intelligent
control warning
function

Adapt to different
climates and
environments.



Using continuous wave radar technology, the intelligent collision warning radar precisely measures the speed information of objects and detects collision hazards within a range of 50 meters, providing real-time warnings. It is combined with sound, light and LED warning signs to provide on-site warnings. It is widely used in industrial equipment collision prevention and intersection collision safety warnings.



Product Specifications - Standard

Antenna beam width	10°x10°
Center frequency	24.125GHz ±100 MHz
Transmit power	10mW
Detection distance	≤ 50m
Communication interface	RS-232 or RS-485
Power consumption	≤ 3.5W
Waterproof specification	IP-67
Environmental adaptability	Operating temperature -40°C~ +70°C ; 0~95%RH